

12" bul.it™ ceiling spec sheet

material

housing

precision CNC spun .063" aluminum parabolic housing with rolled bottom edge for added strength.
 21 standard powder coat paint finishes.

array platform

.080" spun aluminum.

bottom lens (optional)

.125" P95 frosted acrylic concave dome with 3 finger holes. recesses slightly into fixture.

optics

.050" spun aluminum conical reflector finished in high reflectance (>92%) matte white powder coat.

LED module

COB array in 2700K, 3000K, 3500K, or 4000K. (call factory for 5000K) (80+ cri standard) optional 90cri (see below).
 under normal operating conditions, the LEDs employed are rated for >50,000hrs L70 (6.8K) per IES TM-21 from LM-80 test data.

driver

integral, programmable, UL class P, class 2, universal input (120-277v), constant current, 0-10v dimming,
 1% minimum dimming level, PF >.9, THD <20%, protections include open and short circuit, overload and over temperature.

mounting

designed to mount to 4 inch octagon junction box (by other). consult factory for installation instructions.

finish

select from standard powder coat paint finishes or specify RAL# for custom colors.

emergency

recommend use of inverter (by other). optional WREM: wired for remote EM battery (by other).



catalog number

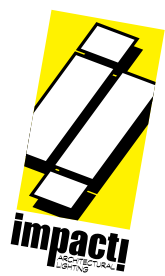
C3312				
-------	--	--	--	--

size	CCT	lumens	painted finishes	options
C3312 12"dia X 13.75"ht <small>see page 2 for info on C3316</small>	27 2700K	FX 1000 lm	AP anodized paint	90CRI
	30 3000K	LO 2000 lm	BN brown	BL Bottom lens
	35 3500K	HI 3000 lm	BR brick red	DRA amber decorative ring
	40 4000K	CL* xxxx lm <small>custom lumens consult factory</small>	BS brass	DRB blue decorative ring
			BU blue	DRF frost decorative ring
			BZ bronze	DRG green decorative ring
			CP champagne	DRR red decorative ring
			FB flat black	DRY yellow decorative ring
			GM gun metal	WREM wired for remote EM battery pack
			GR green	
			MB military blue	
			MN mint	
			MW matte white	
			OR orange	
			PL purple	
			RD red	
			SB satin black	
			SS satin silver	
			TG textured gray	
			TW textured white	
			YO yellow	



premium finish

RAL specify RAL#



job name:
 type:

16" bul.it™ ceiling spec sheet

material

housing

precision CNC spun .063" aluminum parabolic housing with rolled bottom edge for added strength.
 21 standard powder coat paint finishes.

array platform

.080" spun aluminum.

bottom lens (optional)

.125" P95 frosted acrylic concave dome with 3 finger holes. recesses slightly into fixture.

optics

.050" spun aluminum conical reflector finished in high reflectance (>92%) matte white powder coat.

LED module

COB array in 2700K, 3000K, 3500K, or 4000K. (call factory for 5000K) (80+ cri standard) optional 90cri (see below).
 under normal operating conditions, the LEDs employed are rated for >50,000hrs L70 (6.8K) per IES TM-21 from LM-80 test data.

driver

integral, programmable, UL class P, class 2, universal input (120-277v), constant current, 0-10v dimming,
 1% minimum dimming level, PF >.9, THD <20%, protections include open and short circuit, overload and over temperature.

mounting

designed to mount to 4 inch octagon junction box (by other). consult factory for installation instructions.

finish

select from standard powder coat paint finishes or specify RAL# for custom colors.

emergency

recommend use of inverter (by other). optional WREM: wired for remote EM battery (by other).



catalog number

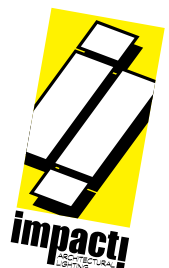
C3316				
-------	--	--	--	--

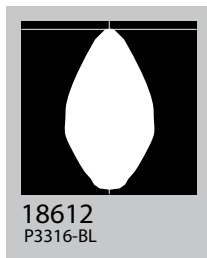
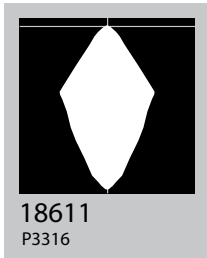
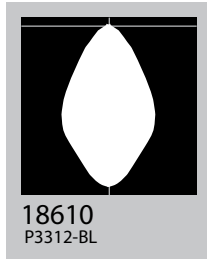
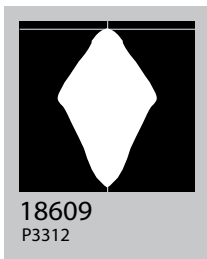
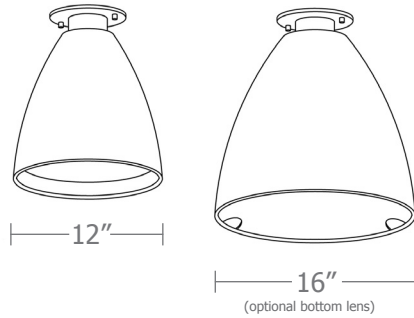
size	CCT	lumens	painted finishes	options
C3316 16" dia X 16.5"ht	27 2700K	FX 1600 lm	AP anodized paint	90CRI
	30 3000K	LO 2900 lm	BN brown	BL Bottom lens
	35 3500K	HI 3700 lm	BR brick red	DRA amber decorative ring
	40 4000K	HX 5000 lm	BS brass	DRB blue decorative ring
		CL* xxxx lm <small>custom lumens consult factory</small>	BU blue	DRF frost decorative ring
			BZ bronze	DRG green decorative ring
			CP champagne	DRR red decorative ring
			FB flat black	DRY yellow decorative ring
			GM gun metal	WREM wired for remote EM battery pack
			GR green	
			MB military blue	
			MN mint	
			MW matte white	
			OR orange	
			PL purple	
			RD red	
			SB satin black	
			SS satin silver	
			TG textured gray	
			TW textured white	
			YO yellow	



premium finish

RAL specify RAL#





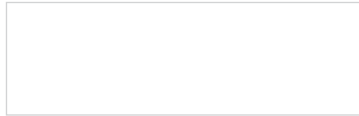
Cat No	Delivered* Lumens	Watts		Amps	
		120V / 277V	120V	120V	277V

C3312 FX	1000	10	.08	.04
C3312 LO	2000	19	.15	.06
C3312 HI	3500	32	.26	.11
	ies file # 18609, 18610**			
C3316 FX	1600	15	.13	.06
C3316 LO	2900	27	.22	.09
C3316 HI	3700	34	.28	.12
	ies file # 18611, 18612**			
C3316 HX	5000	40	.34	.15

*delivered lumens based on 4000K, 80+ cri (90cri multiplier .83)

**includes bottom lens option and BL multiplier .90

Powder Coat Paint Finishes



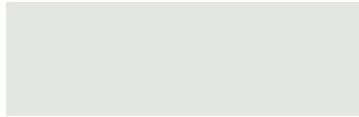
MW matte white



CP champagne



YO yellow 1018



TW textured white



BZ bronze



RD red 3020



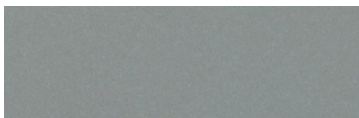
AP anodized paint



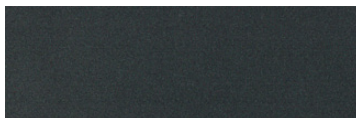
BS brass



BU blue 5017



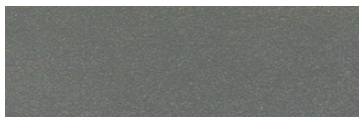
SS satin silver



GM gun metal



OR orange 2011



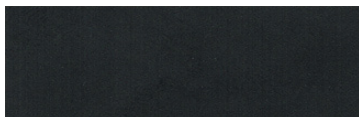
TG textured gray



BR brick red



MN mint 6019



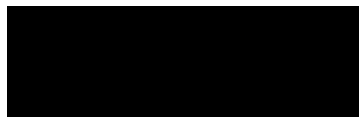
FB flat black



BN brown 8023



GR green 6018



SB satin black



MB military blue



PL purple 4005

For accurate color verification, actual finish samples are available upon request.

Premium Finishes*



RAL#

*Available on select series. Consult product submittal for availability.

