

job name:
 type:

flt.maxx™ spec sheet 90CRI

material

trim ring

precision CNC spun .063" aluminum. rolled bottom edge for added strength.

diffuser

.177" non-glare light matte high transmission acrylic drop lens held in place with allen key set screws recessed into trim ring.

top lens (optional)

.125" vibrant gloss acrylic, available in white or a variety of colors. subtle glow.

optics

reflector

.050" aluminum array platform painted high reflectance (>92%) matte white powder coat provides 90% downlight.

LED

custom LED board in 3000K, 3500K, or 4000K (90+ cri standard).

under normal operating conditions, the LEDs employed are rated for >50,000hrs L70 (6.8K) per IES TM-21 from LM-80 test data. white power cord is standard with other color options listed below.

driver

integral, programmable, UL class P, class 2, universal input (120-277v), constant current, 0-10v dimming, 1% minimum dimming level, PF >.9, THD <20%, protections include open and short circuit, overload and over temperature.

mounting

5" dia. spun steel canopy in satin white is designed to mount to a 4" octagon junction box (by other). 12' stainless steel cable connects to field adjustable collector. An array of cables branch off and attach to trim with adjustable grippers. cable system allows for exact AFF mounting heights. sloped ceiling adapter.

emergency

recommend use of inverter (by other).

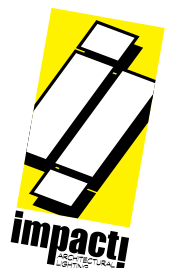


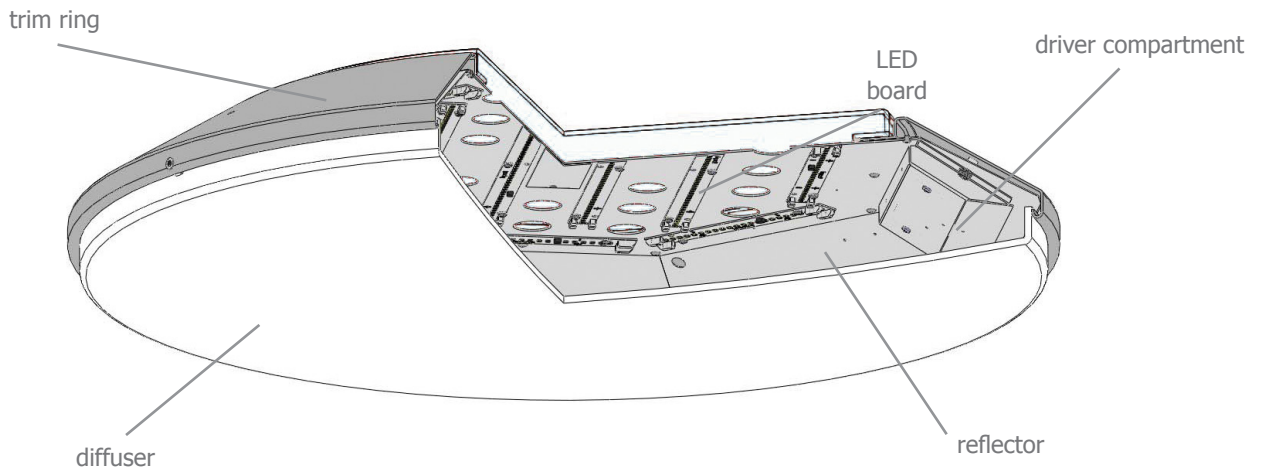
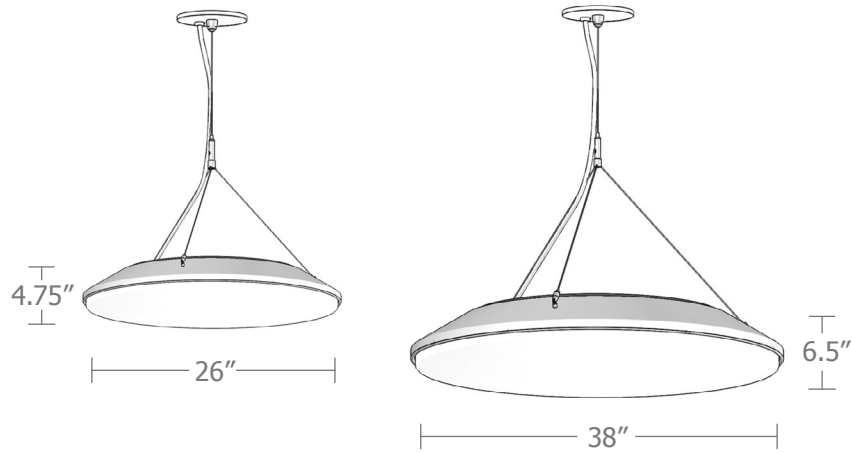
catalog number

size	top lens	CCT	lumens	power cord	options
P7826 (2ft) 26"dia X 4.75"ht	N no top lens <small>(10% up light)</small> A amber B blue R red W white	30 3000K	FX 2600 lm	WHPC white power cord and canopy BKPC black power cord and canopy SBPC silver braid power cord and white canopy	WREM wired for remote EM battery pack <small>(by other) (see note above)</small> ELD EldoLED* LUT Lutron* <small>*consult factory</small>
		35 3500K	LO 5100 lm		
		40 4000K	HI 8300 lm		
			HX 9700		
P7838 (3ft) 38"dia X 6.75"ht		30 3000K	FX 5150 lm	AP anodized paint BS brass BU blue BZ bronze CP champagne FB flat black GM gun metal MB military blue MW matte white OR orange RD red SB satin black SS satin silver TG textured gray YO yellow	
		35 3500K	LO 10200 lm		
		40 4000K	HI 16600 lm		
			HX 19400 lm		
			CL xxxx lm <small>custom lumens consult factory</small>		

premium finish

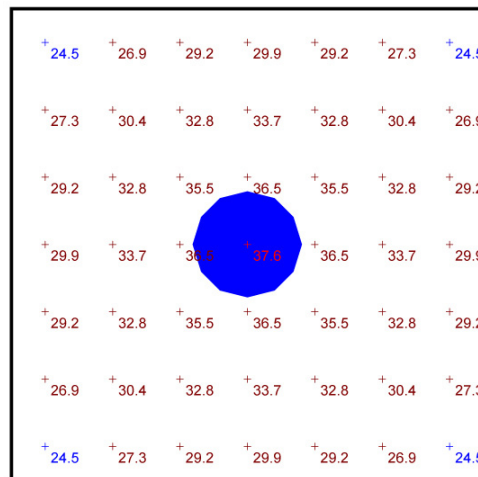
RAL specify RAL#





Typical Lighting Layout

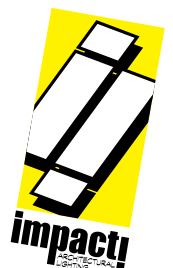
- 14' x 14' x 20'H space
- 80/50/20 reflectances
- bottom of fixture at 16' aff
- FC readings at 2.5' aff
- layout conducted using 38" dia. unit with HI lumen 90 CRI package providing 16600 delivered lumens



Plan View
Scale - 1" = 4ft

Statistics

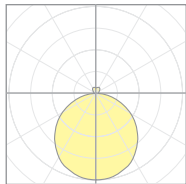
Description	Symbol	Avg	Max	Min	Max/Min	Avg/Min
flt.maxx	+	30.9 fc	37.6 fc	24.5 fc	1.5:1	1.3:1



Calculation Table

The application of a Light Loss Factor is required to:

- match the lumen output for the power module specified
- incorporate the increased lumen output due to LED/Driver upgrades



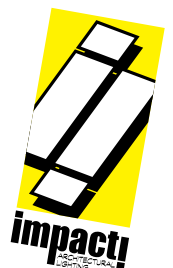
18689
P7838 (no top lens)

Cat No	Delivered* Lumens	Watts 120V / 277V	IES File #	LLF to be applied
P7826 FX	2600	30	18685	.38
P7826 LO	5100	59	18685	.75
P7826 HI	8300	96	18685	1.21
P7826 HX	9700	112	18685	1.42
P7838 FX	5150	59	18688	.70
P7838 LO	10200	118	18688	1.40
P7838 HI	16600	192	18689	1.40
P7838 HX	19400	224	18689	1.63

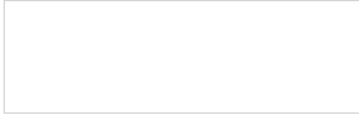
*delivered lumens based on 4000K, 90+ cri

The application of a Light Loss Factor is required to:

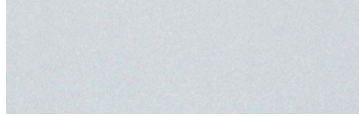
- match the lumen output for the power module specified
- incorporate the increased lumen output due to LED/Driver upgrades



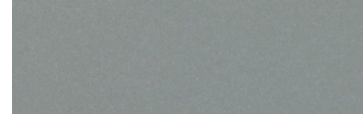
Powder Coat Paint Finishes



MW matte white



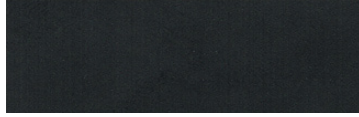
AP anodized paint



SS satin silver



TG textured gray



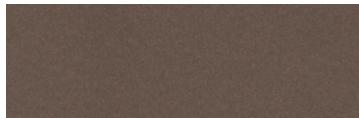
FB flat black



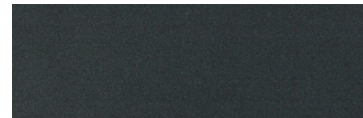
SB satin black



CP champagne



BZ bronze



GM gun metal



OR orange 2011



BU blue 5017



BS brass



RD red 3020



YO yellow 1018



MB military blue

For accurate color verification, actual finish samples are available upon request.

Premium Finishes*



RAL#

*Available on select series. Consult product submittal for availability.

