

job name:
 type:

fun.l™ spec sheet

driver housing / power head

extruded aluminum with silver anodized or black anodized finish, acts as heat sink as well. also available in painted finishes listed below.

diffuser

6" dia. .100" clear acrylic cylinder solvent welded to 10" dia gloss white acrylic cone.

LED module

COB array in 2700K, 3000K, 3500K, or 4000K. (call factory for 5000K) (80+ cri standard) optional 90cri (see below). under normal operating conditions, the LEDs employed are rated for >50,000hrs L70 (6.8K) per IES TM-21 from LM-80 test data.

driver

integral, programmable, UL class P, class 2, universal input (120-277v), constant current, 0-10v dimming, 1% minimum dimming level, PF >.9, THD <20%, protections include open and short circuit, overload and over temperature.

mounting

5" dia. spun steel canopy in satin white with single or dual stainless steel cables and field adjustable grippers that allow for exact AFF mounting heights.

premium mountings

colored cloth cord (optional)

extruded aluminum canopy painted to match fixture. ultrathin vertical stainless steel cable and field adjustable gripper that allow for exact AFF mounting heights. cloth-covered power cord color options listed below. cord requires special stripping tool (link).

power over cable (optional)

extruded aluminum canopy painted to match fixture. Class 2 LED powered suspension system that suspends and powers the fixture with thin stainless steel copper-core conductive cables, providing a clean look without the need for a separate power cord. powered suspension requires cable cutter (link) specifically designed to cut stainless steel aircraft cable from 1/32" to 1/8".

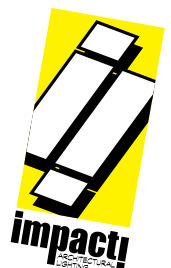
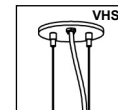
emergency

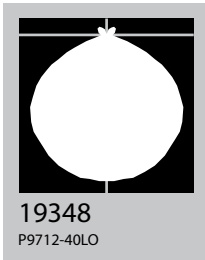
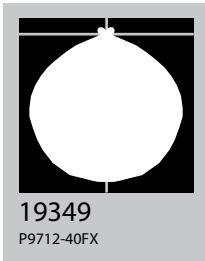
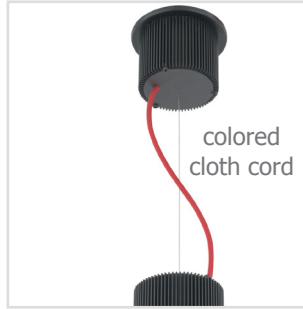
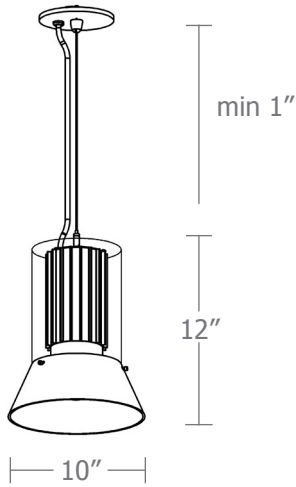
recommend use of inverter (by other). optional WREM: wired for remote EM battery (by other). if using WHPC, SBPC, or BKPC cords, 2nd power cord required.



catalog number

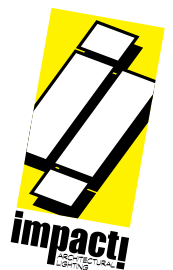
P9712					
size	CCT	lumens	powerhead finish	power cord	options
P9712 10"dia X 12"ht	27 2700K	FX 1660 lm	AN silver anodized	WHPC white power cord and canopy	3FT 36" cable
	30 3000K	LO 2375 lm	ANB anodized black	BKPC black power cord and canopy	6FT 72" cable
	35 3500K	CL* xxxx lm <small>*custom lumens consult factory</small>	Painted finish	SBPC silver braid power cord and white canopy	12FT 144" cable*
	40 4000K		BN brown	premium (driver canopy required) (not available w/ 12ft option)	90CRI
			BR brick red	BUPC blue cloth cord	VHS 2-point vertical hanging system
			BS brass	ORPC orange cloth cord	WREM wired for remote EM battery pack <small>(by other) (see note above)</small>
			BU blue	PLPC purple cloth cord	<small>*not available with premium power cords</small>
			BZ bronze	RDPC red cloth cord	
			CP champagne	WGPC white & gray dot cloth cord	
			GM gun metal	POC power over cable	
			GR green		
			MB military blue		
			MN mint		
			MW matte white		
			OR orange		
			PL purple		
			RD red		
			SS satin silver		
			TG textured gray		
			TW textured white		
			YO yellow		
			premium finish		
			RAL specify RAL#		



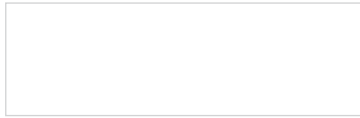


Cat No	Delivered Lumens*	Watts		Amps	
		120V / 277V	120V	277V	
P9712 FX	1600	14	.12	.05	
		ies file # 19349			
P9712 LO	2300	20	.17	.07	
		ies file # 19348			

*delivered lumens based on 4000K, 80+ cri (90cri multiplier .83)



Powder Coat Paint Finishes



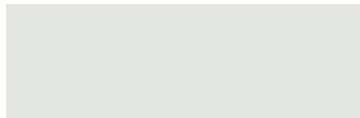
MW matte white



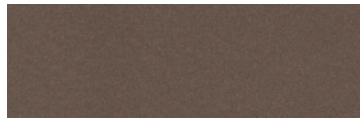
CP champagne



YO yellow 1018



TW textured white



BZ bronze



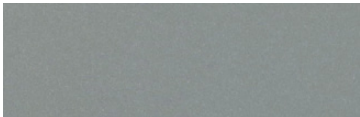
RD red 3020



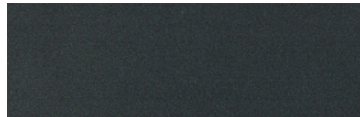
BS brass



BU blue 5017



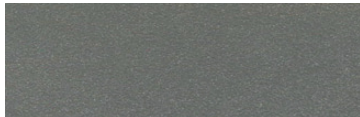
SS satin silver



GM gun metal



OR orange 2011



TG textured gray



BR brick red



MN mint 6019



BN brown 8023



GR green 6018



MB military blue



PL purple 4005

For accurate color verification, actual finish samples are available upon request.

Premium Finishes*



RAL#

*Available on select series. Consult product submittal for availability.

