

job name:
 type:

na.row.up™ spec sheet direct/indirect

material
 smooth extruded aluminum outer housing in four lengths available in 21 standard powder coat paint finishes listed below.

LED
 COBs in 2700K, 3000K, 3500K, or 4000K (80 cri standard) (90 cri optional) rated >36,000 hours L70 (6.8K) per LM-80 test data, and 71,000 hours projected life per IES TM-21.

downlight optics
 LEDiL® Angelina 82mm dia 31mm high (RoHS compliant) available in 20° spot, 30° medium, 50° wide with specular anodized finish. 90° extra wide features matte white highly reflective finish. color mixing sublens standard. standard mounting clamp allows for easy replacement of reflector in field. the typical total beam angle is the full angle measured where the luminous intensity is half of the peak volume.

uplight diffuser
 .118" thick laser cut optimum light diffusion acrylic. 72% light transmission with matte surface providing light scattering glare reduction. Colorless diffusion significantly reducing color shift of the LED's.

drivers
 in canopy, constant current, class P, class 2 power units, class A sound rating, universal input (120-277V) programmable driver, 5% minimum dimming level, PF >0.90. protections include short circuit, input/output isolation and surge protection (3KV). wired for 0-10v dimming from factory.

mounting
 extruded aluminum canopy painted to match fixture. ultrathin vertical stainless steel cables and field adjustable grippers that allow for exact AFF mounting heights. silver braid power cord standard.

finish
 select from 21 standard powder coat paint finishes listed below or specify RAL# for custom colors.

emergency
 if required, recommend use of inverter (by other).



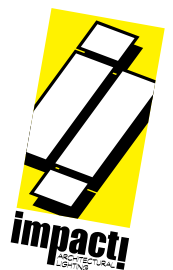
catalog number

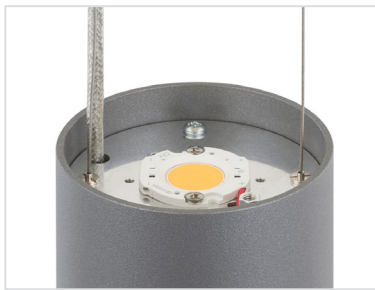
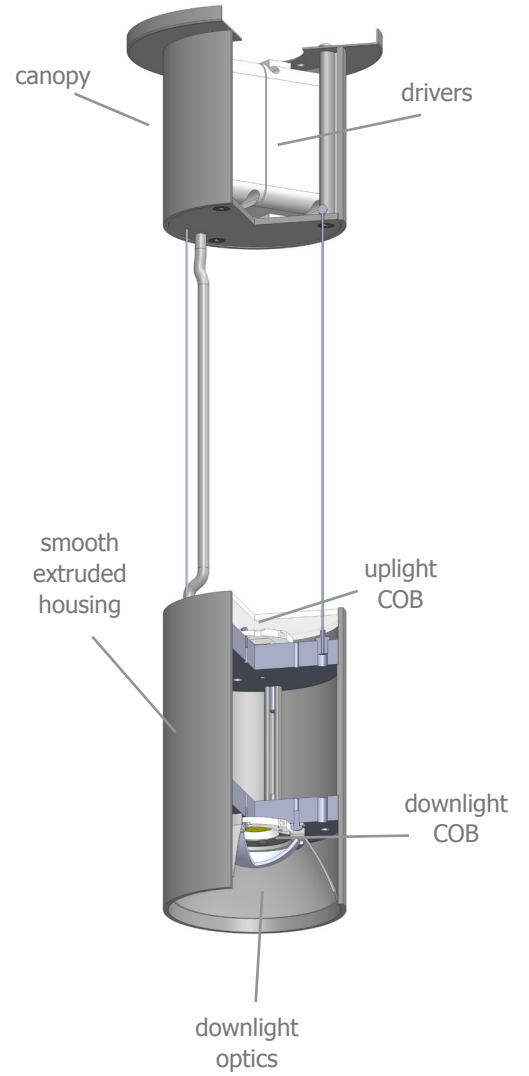
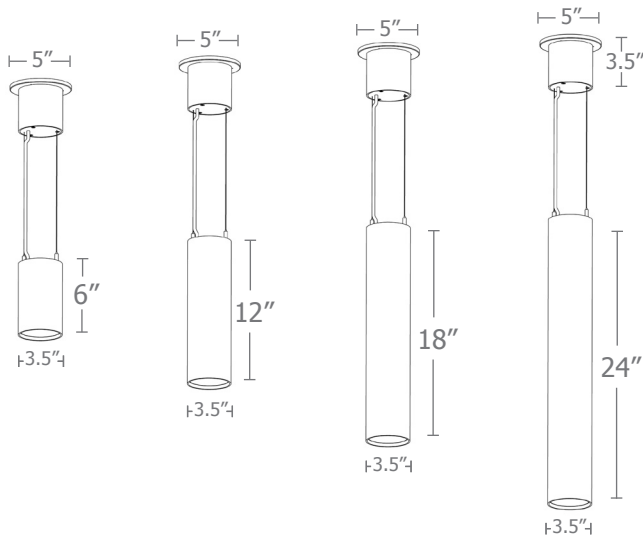
direct

indirect

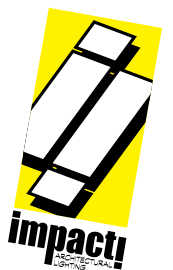
size	downlight beam spread	CCT	downlight lumens	uplight lumens	anodized finishes	options
P7606.up 3.5"dia X 6"ht	S 20° spot M 30° med W 50° wide XW 90° extra wide	27 2700K 30 3000K 35 3500K 40 4000K	L1 475 lm L2 830 lm L3 1190 lm H1 1665 lm H2 2380 lm	L1 405 lm L2 710 lm L3 1010 lm H1 N/A	AP anodized paint BN brown BR brick red BS brass BU blue BZ bronze CP champagne FB flat black GM gun metal GR green MB military blue MN mint MW matte white OR orange PL purple RD red SB satin black SS satin silver TG textured gray TW textured white YO yellow	3FT 36" cables 6FT 72" cables 90CRI
P7612.up 3.5"dia X 12"ht			L1 475 lm L2 830 lm	L1 405 lm L2 710 lm		
P7618.up 3.5"dia X 18"ht			L3 1190 lm H1 1665 lm	L3 1010 lm H1 1420 lm		
P7624.up 3.5"dia X 24"ht			H2 2380 lm H3 3330 lm			

premium finish
 RAL specify RAL#





color mixing sub lens



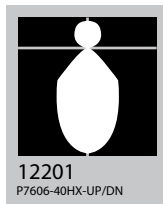
Quick Calc Table

Tests indicated below are a combination of direct and indirect. LLFs are as close as possible. Downlight is given priority.

for more detailed calculations see table on next page.

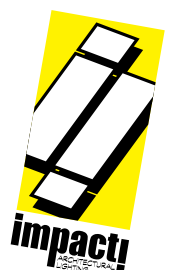
Cat No	Direct Delivered* Lumens	Indirect Delivered* Lumens	Watts 120V / 277V	IES File #	LLF to be applied
P7606 L1 L1	475	405	8	12201	.17
P7606 L2 L2	830	710	14	12201	.29
P7606 L3 L3	1190	1010	20	12201	.42
P7606 H1 L3	1665	1010	24	12201	.58
P7606 H2 L3	2380	1010	30	12201	.83
P7612 L1 L1	475	405	8	12203	.13
P7612 L2 L2	830	710	14	12203	.24
P7612 L3 L3	1190	1010	20	12203	.34
P7612 H1 H1	1665	1420	28	12203	.47
P7612 H2 H1	2380	1420	34	12203	.67
P7612 H3 H1	3330	1420	43	12203	.94

*delivered lumens based on 4000K, 80+ cri (90cri multiplier .83)



The application of a Light Loss Factor is required to:

- match the lumen output for the power module specified
- incorporate the increased lumen output due to LED/Driver upgrades



Advanced Calculation Table

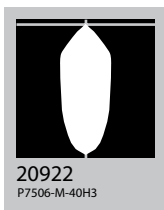
Tests are for each element separately and must be "stacked" to represent single fixture
 Consult factory for applications assistance

Direct

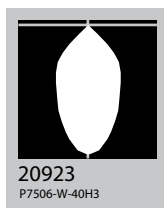
Indirect

Cat No	Delivered* Lumens	Watts 120V / 277V	IES File #	LLF to be applied	Delivered* Lumens	Watts 120V / 277V	IES File #	LLF to be applied
L1	475	4	20921 spot	.15	405	4	12202	.29
			20922 med	.15				
			20923 wide	.15				
			20924 x-wide	.15				
L2	830	7	20921 spot	.26	710	7	12202	.50
			20922 med	.26				
			20923 wide	.26				
			20924 x-wide	.25				
L3	1190	10	20921 spot	.37	1010	10	12202	.72
			20922 med	.37				
			20923 wide	.38				
			20924 x-wide	.36				
H1	1665	14	20921 spot	.52	1420	14	12202	1.01
			20922 med	.52				
			20923 wide	.53				
			20924 x-wide	.51				
H2	2380	21	20921 spot	.74	N/A P7506			
			20922 med	.75				
			20923 wide	.75				
			20924 x-wide	.73				
H3	3330	28	20921 spot	1.04				
			20922 med	1.05				
			20923 wide	1.05				
			20924 x-wide	1.02				

*delivered lumens based on 4000K, 80+ cri (90cri multiplier .83)



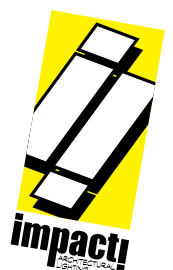
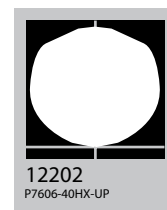
M 30° med



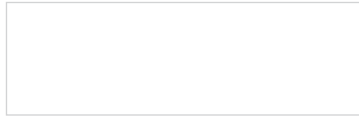
W 50° wide

The application of a Light Loss Factor is required to:

- match the lumen output for the power module specified
- incorporate the increased lumen output due to LED/Driver upgrades



Powder Coat Paint Finishes



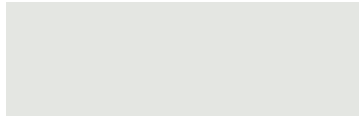
MW matte white



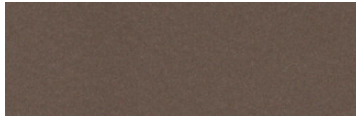
CP champagne



YO yellow 1018



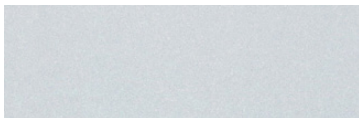
TW textured white



BZ bronze



RD red 3020



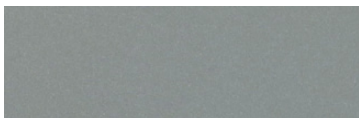
AP anodized paint



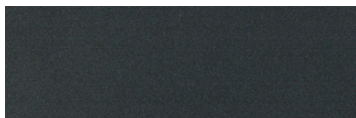
BS brass



BU blue 5017



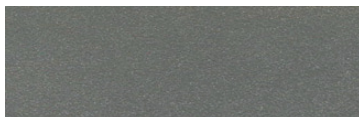
SS satin silver



GM gun metal



OR orange 2011



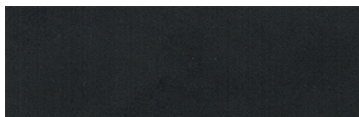
TG textured gray



BR brick red



MN mint 6019



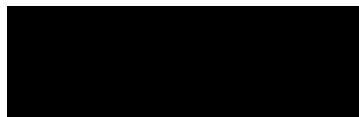
FB flat black



BN brown 8023



GR green 6018



SB satin black



MB military blue



PL purple 4005

For accurate color verification, actual finish samples are available upon request.

Premium Finishes*



RAL#

*Available on select series. Consult product submittal for availability.

