

str8.up™ spec sheet direct/indirect

material
 ribbed extruded aluminum outer housing in two lengths available in 2 anodized and 19 standard powder coat paint finishes listed below.

LED
 COBs in 2700K, 3000K, 3500K, or 4000K (80 cri standard) (90 cri optional) rated >36,000 hours L70 (6.8K) per LM-80 test data, and 71,000 hours projected life per IES TM-21.

downlight optics
 LEDiL® Angelina 82mm dia 31mm high (RoHS compliant) available in 20° spot, 30° medium, 50° wide with specular anodized finish. 90° extra wide features matte white highly reflective finish. color mixing sublens standard. standard mounting clamp allows for easy replacement of reflector in field. the typical total beam angle is the full angle measured where the luminous intensity is half of the peak volume.

uplight diffuser
 .118" thick laser cut optimum light diffusion acrylic. 72% light transmission with matte surface providing light scattering glare reduction. Colorless diffusion significantly reducing color shift of the LED's.

drivers
 in canopy, constant current, class P, class 2 power units, class A sound rating, universal input (120-277V) programmable driver, 5% minimum dimming level, PF >0.90. protections include short circuit, input/output isolation and surge protection (3KV). wired for 0-10v dimming from factory.

mounting
 extruded aluminum canopy painted to match fixture. ultrathin vertical stainless steel cables and field adjustable grippers that allow for exact AFF mounting heights. silver braid power cord standard.

finish
 select from 2 anodized and 19 standard powder coat paint finishes listed below or specify RAL# for custom colors.

emergency
 if required, recommend use of inverter (by other).

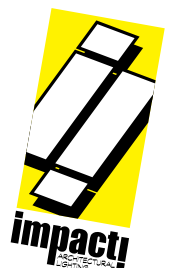


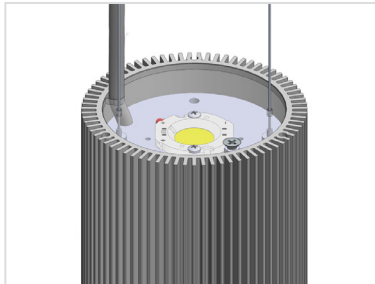
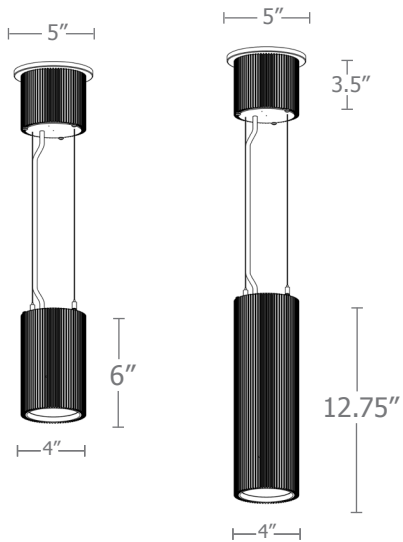
catalog number

direct

indirect

size	downlight beam spread	CCT	downlight lumens	uplight lumens	anodized finishes	options
P7506.up 4"dia X 6.5"ht	S 20° spot	27 2700K	L1 450 lm	L1 420 lm	AN silver anodized	3FT 36" cables
	M 30° med	30 3000K	L2 800 lm	L2 735 lm	ANB anodized black	6FT 72" cables
	W 50° wide	35 3500K	L3 1000 lm	L3 1050 lm	painting finish	90CRI
	XW 90° extra wide	40 4000K	H1 1500 lm H2 2200 lm	H1 N/A	BN brown BR brick red BS brass BU blue BZ bronze CP champagne GM gun metal GR green MB military blue MN mint MW matte white OR orange PL purple RD red SS satin silver TG textured gray TW textured white YO yellow	
P7512.up 4"dia X 12.75"ht			L1 450 lm	L1 420 lm	premium finish	
			L2 800 lm	L2 735 lm	RAL specify RAL#	
			L3 1000 lm	L3 1050 lm		
			H1 1500 lm H2 2200 lm H3 3000 lm	H1 1465 lm		

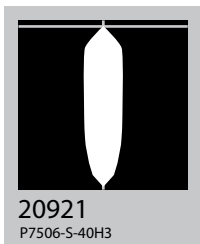




Cat No Direct **Watts** Indirect **Watts**
 Delivered* 120V / 277V Delivered* 120V / 277V
 Lumens Lumens

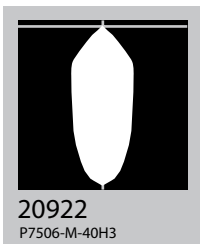
Cat No	Direct Delivered* Lumens	Watts 120V / 277V	Indirect Delivered* Lumens	Watts 120V / 277V
L1	450	4	405	4
L2	800	7	705	7
L3	1000	10	1010	10
H1	1500	14	N/A P7606 1410	14
H2	2200	20	12202	
H3	3000	29		
	S 20° spot	M 30° med	W 50° wide	XW 90° extra
ies file #	20921	20922	20923	20924

*delivered lumens based on 4000K, 80+ cri (90cri multiplier .83)



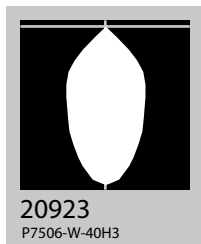
20921
P7506-S-40H3

S 20° spot



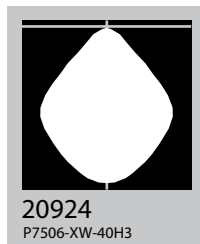
20922
P7506-M-40H3

M 30° med



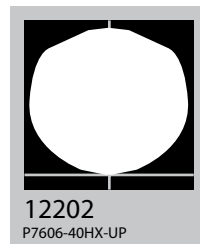
20923
P7506-W-40H3

W 50° wide

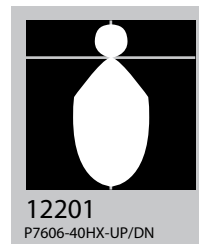


20924
P7506-XW-40H3

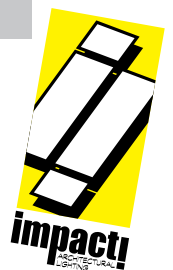
XW 90° extra wide



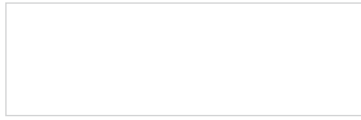
12202
P7606-40HX-UP



12201
P7606-40HX-UP/DN



Powder Coat Paint Finishes



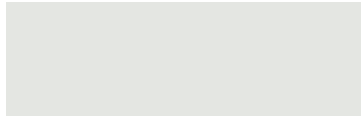
MW matte white



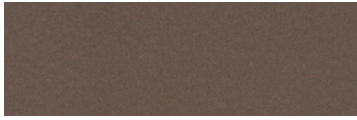
CP champagne



YO yellow 1018



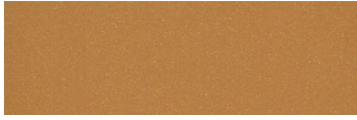
TW textured white



BZ bronze



RD red 3020



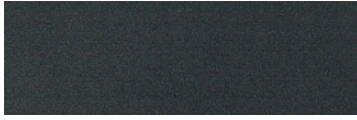
BS brass



BU blue 5017



SS satin silver



GM gun metal



OR orange 2011



TG textured gray



BR brick red



MN mint 6019



BN brown 8023



GR green 6018



MB military blue



PL purple 4005

For accurate color verification, actual finish samples are available upon request.

Premium Finishes*



RAL#

*Available on select series. Consult product submittal for availability.

