

job name:   
 type:

# str8™ ceiling spec sheet

**material**

4" ribbed extruded aluminum outer housing in two lengths available in 2 anodized and 19 standard powder coat paint finishes listed below.

**LED**

COB in 2700K, 3000K, 3500K, or 4000K (80 cri standard) (90 cri optional) rated >36,000 hours L70 (6.8K) per LM-80 test data.

**driver**

integral,\* constant current, class P, class 2 power unit, class A sound rating, universal input (120-277V) programmable driver, 5% minimum dimming level, PF >0.90. protections include short circuit, input/output isolation and surge protection (3KV). wired for 0-10v dimming from factory. \*H3 lumen package in C7506 requires min. 2-1/8" deep j-box.

**finish**

select from 2 anodized and 19 standard powder coat paint finishes listed below or specify RAL# for custom colors.

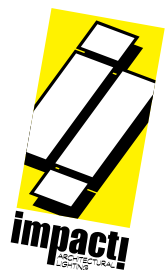
**emergency**

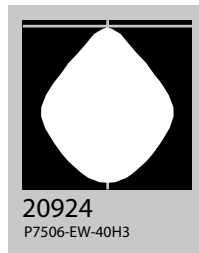
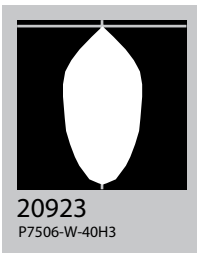
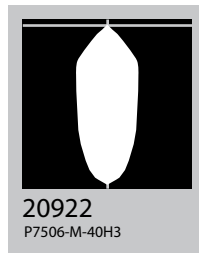
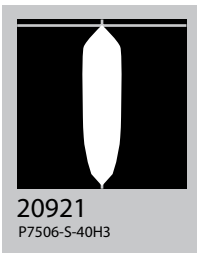
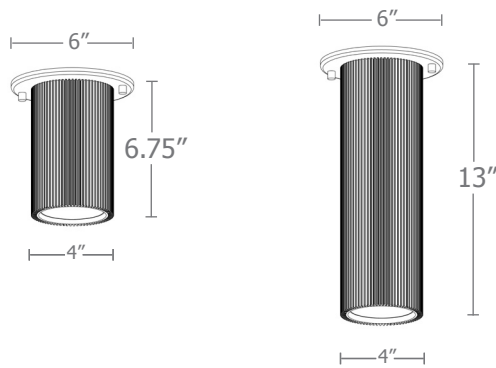
if required, recommend use of inverter (by other).



## catalog number

size	beam	CCT	lumens	anodized finishes	options
<b>C7506</b> 4"dia X 6.75"ht	<b>S</b> 20° spot <b>M</b> 30° med <b>W</b> 50° wide	<b>27</b> 2700K <b>30</b> 3000K	<b>L1</b> 450 lm <b>L2</b> 800 lm	<b>AN</b> silver anodized <b>ANB</b> anodized black	<b>90CRI</b>
<b>C7512</b> 4"dia X 13"ht	<b>XW</b> 90° extra wide	<b>35</b> 3500K <b>40</b> 4000K	<b>L3</b> 1000 lm <b>H1</b> 1500 lm <b>H2</b> 2200 lm <b>H3*</b> 3000 lm <small>*H3 lumen package in C7506 requires min. 2-1/8" deep j-box.</small>	<b>painted finish</b> <b>BN</b> brown <b>BR</b> brick red <b>BS</b> brass <b>BU</b> blue <b>BZ</b> bronze <b>CP</b> champagne <b>GM</b> gun metal <b>GR</b> green <b>MB</b> military blue <b>MN</b> mint <b>MW</b> matte white <b>OR</b> orange <b>PL</b> purple <b>RD</b> red <b>SS</b> satin silver <b>TG</b> textured gray <b>TW</b> textured white <b>YO</b> yellow	
				<b>premium finish</b> <b>RAL</b> specify RAL#	



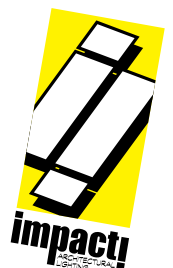


**Cat No**      **Delivered\* Lumens**      **Watts 120V / 277V**      **Amps 120V 277V**

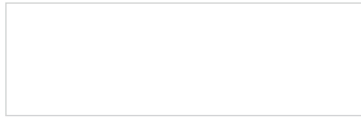
<b>L1</b>	450	4	.03	.01
<b>L2</b>	800	7	.06	.03
<b>L3</b>	1000	10	.08	.04
<b>H1</b>	1500	14	.12	.05
<b>H2</b>	2200	20	.17	.07
<b>H3**</b>	3000	29	.24	.10
	<b>S 20° spot</b>	<b>M 20° med</b>	<b>W 20° wide</b>	<b>XW 20° extra</b>
ies file #	20921	20922	20923	20924

\*delivered lumens based on 4000K, 80+ cri (90cri multiplier .83)

\*\*H3 lumen package in C7506 requires min. 2-1/8" deep j-box..



**Powder Coat Paint Finishes**



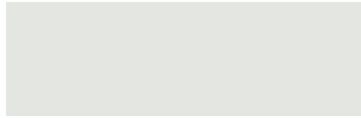
**MW** matte white



**CP** champagne



**YO** yellow 1018



**TW** textured white



**BZ** bronze



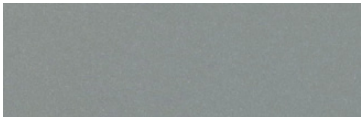
**RD** red 3020



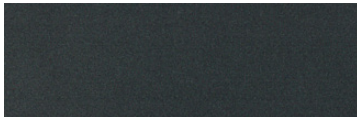
**BS** brass



**BU** blue 5017



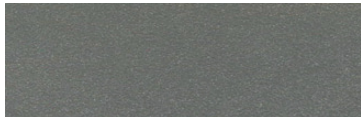
**SS** satin silver



**GM** gun metal



**OR** orange 2011



**TG** textured gray



**BR** brick red



**MN** mint 6019



**BN** brown 8023



**GR** green 6018



**MB** military blue



**PL** purple 4005

For accurate color verification, actual finish samples are available upon request.

**Premium Finishes\***



**RAL#**

\*Available on select series. Consult product submittal for availability.

