

job name:
 type:

min|skrt™ spec sheet

material

housing

precision CNC spun .064" aluminum outer housing available in 21 standard powder coat paint finishes listed below.
 .060" aluminum liner powder coat painted high reflectance matte white.

diffuser

choose from .125" white acrylic or .064" spun aluminum powder coat painted high reflectance matte white.

LED

custom LED board in 3000K, 3500K, or 4000K (80+ cri standard) optional 90cri (see below). LEDs are rated >50,000 hours L70 (10K) at 85°C per LM-80 test data, and 70,000 hours projected life per IES TM-21. power cord color options listed below.

driver

in canopy, constant current, class P class 2 power unit, class A sound rating, universal input (120-277V) programmable driver, 1% minimum dimming level, PF >0.90. protections include short circuit, input/output isolation and surge protection (3KV). wired for 0-10v dimming from factory.

mounting

spun aluminum canopy painted to match fixture. three ultrathin vertical stainless steel cables and field adjustable grippers that allow for exact AFF mounting heights. cloth-covered power cord color options listed below. cord requires special stripping tool (link).

power over cable (optional)

Class 2 LED powered suspension system that suspends and powers the fixture with thin stainless steel copper-core conductive cables, providing a clean look without the need for a separate power cord. powered suspension requires cable cutter (link) specifically designed to cut stainless steel aircraft cable from 1/32" to 1/8".

finish

select from standard powder coat paint finishes or specify RAL# for custom colors.

emergency

if required, recommend use of inverter (by other).



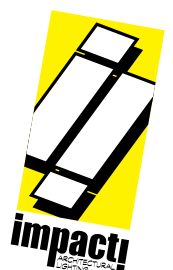
catalog number

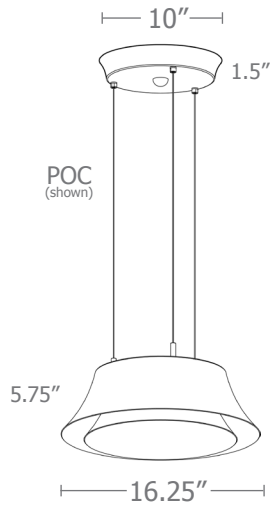
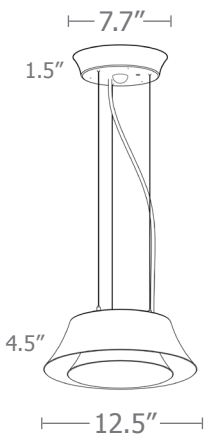
<input type="text"/>	<input type="text"/>	<input type="text"/>	<input type="text"/>	<input type="text"/>	<input type="text"/>
----------------------	----------------------	----------------------	----------------------	----------------------	----------------------

size	diffuser	LED	standard finishes	power cord	options
P6112 12.5"dia X 4.5"ht	A acrylic M metal	30LO 3000K 30HI 3000K 35LO 3500K 35HI 3500K 40LO 4000K 40HI 4000K	AP anodized paint BN brown BR brick red BS brass BU blue BZ bronze CP champagne FB flat black GM gun metal GR green MB military blue MN mint MW matte white OR orange PL purple RD red SB satin black SS satin silver TG textured gray TW textured white YO yellow	BUPC blue cloth cord ORPC orange cloth cord PLPC purple cloth cord RDPC red cloth cord WGPC white & gray dot cloth cord POC power over cable	3FT 36" cables 6FT 72" cables 90CRI

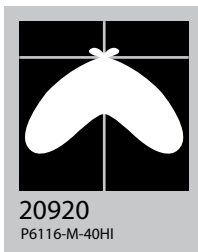
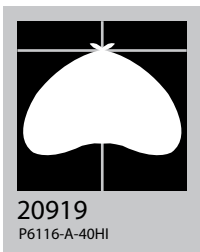
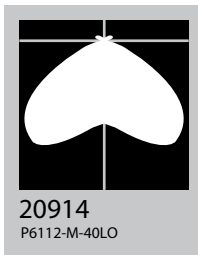
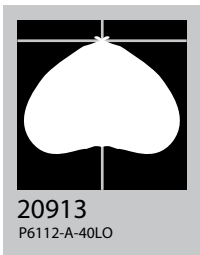
premium finish

RAL specify RAL#



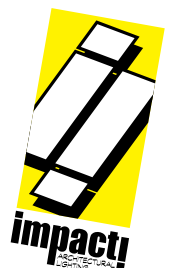


colored cloth cord

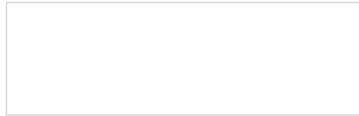


Cat No	Delivered* Lumens	Watts		Amps	
		120V / 277V	120V	277V	277V
P6112-A LO	1241	11	.08	.04	
	ies file # 20913				
P6112-M LO	1001	11	.08	.04	
	ies file # 20914				
P6112-A HI	2645	26	.19	.08	
	ies file # 20915				
P6112-M HI	2147	26	.19	.08	
	ies file # 20916				
P6116-A LO	2817	26	.19	.08	
	ies file # 20917				
P6116-M LO	2120	26	.19	.08	
	ies file # 20918				
P6116-A HI	3970	39	.28	.12	
	ies file # 20919				
P6116-M HI	3008	39	.28	.12	
	ies file # 20920				

*delivered lumens based on 4000K, 80+ cri (90cri multiplier .83)



Powder Coat Paint Finishes



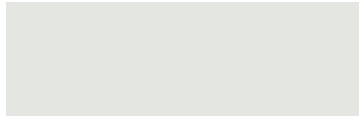
MW matte white



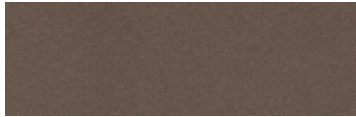
CP champagne



YO yellow 1018



TW textured white



BZ bronze



RD red 3020



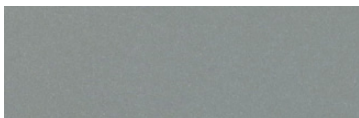
AP anodized paint



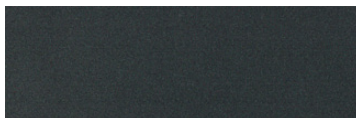
BS brass



BU blue 5017



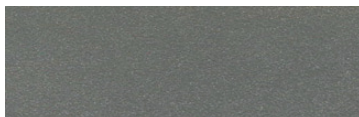
SS satin silver



GM gun metal



OR orange 2011



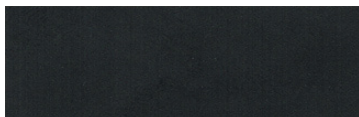
TG textured gray



BR brick red



MN mint 6019



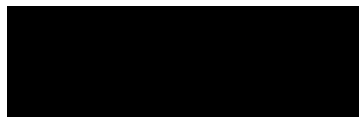
FB flat black



BN brown 8023



GR green 6018



SB satin black



MB military blue



PL purple 4005

For accurate color verification, actual finish samples are available upon request.

Premium Finishes*



RAL#

*Available on select series. Consult product submittal for availability.

