



i.rod™ 5-slider

your lighting rep has
recommended the **i.rod™**
cylinder pendant for your project
Let's take a quick look:



sizes and lumens

P9424



P9436



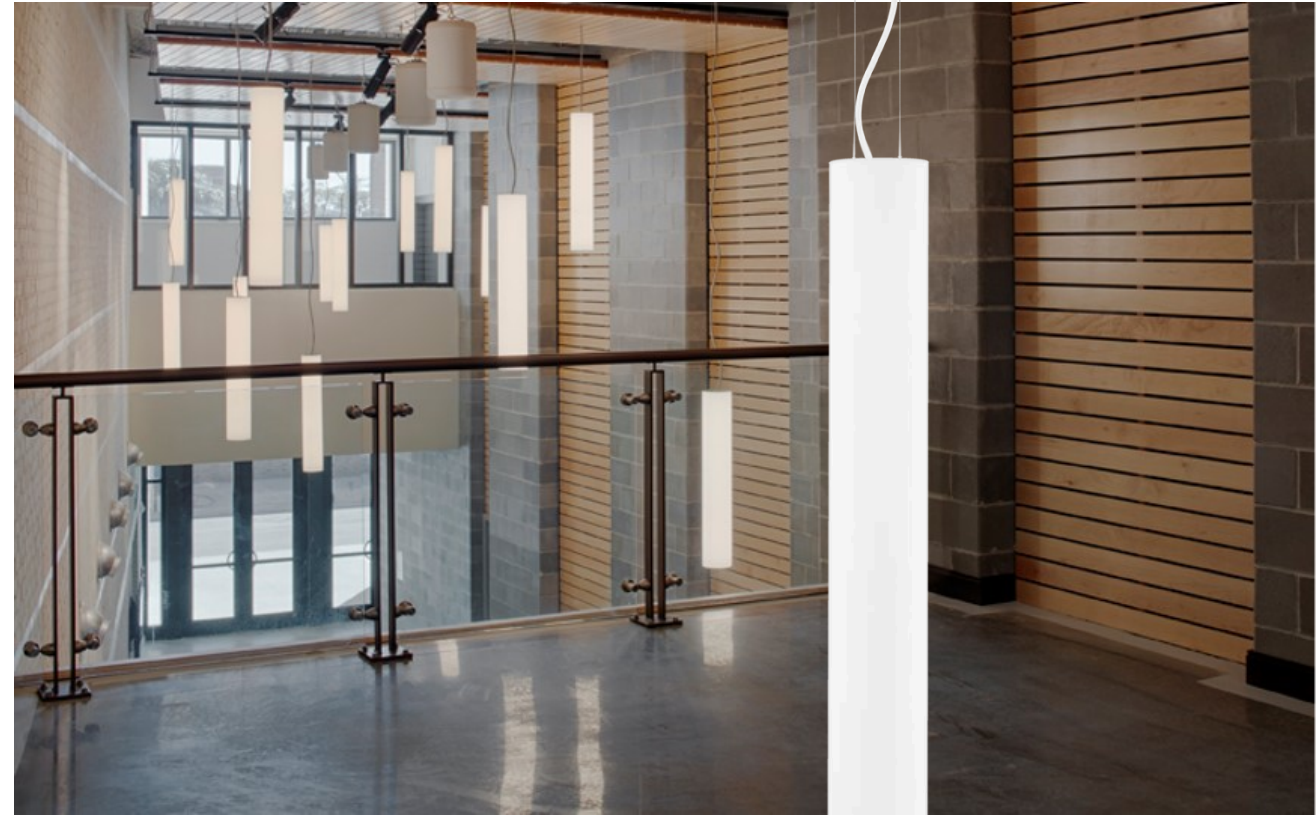
P9448



P9472

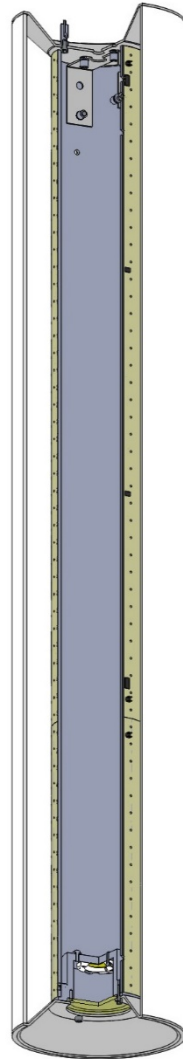


- P9424 (24") / 1004 – 1513 lm
- P9436 (36") / 1562 – 2897 lm
- P9448 (48") / 2159 – 4483 lm
- P9472 (72") / 3239 – 6007 lm

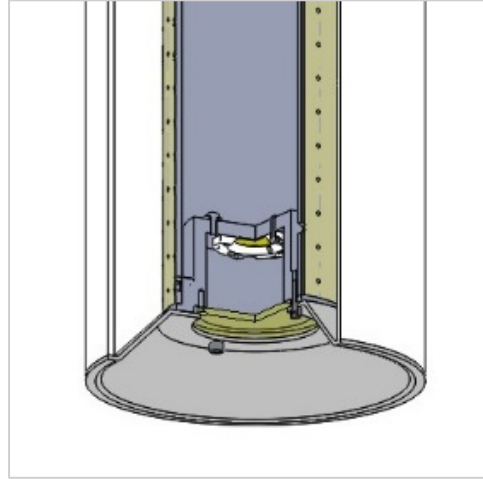


construction

mounts to 7"/10" dia. spun aluminum canopy in matte white finish via. dual 12ft stainless steel cables with field adjustable grippers allowing for exact desired mounting height



canopy mounted driver, constant current, field maintainable, universal input (120-277), 0-10v controllable to 1% dimming.



flexible planar LED lighting sheet wrapped around cylinder core provides totally even luminance

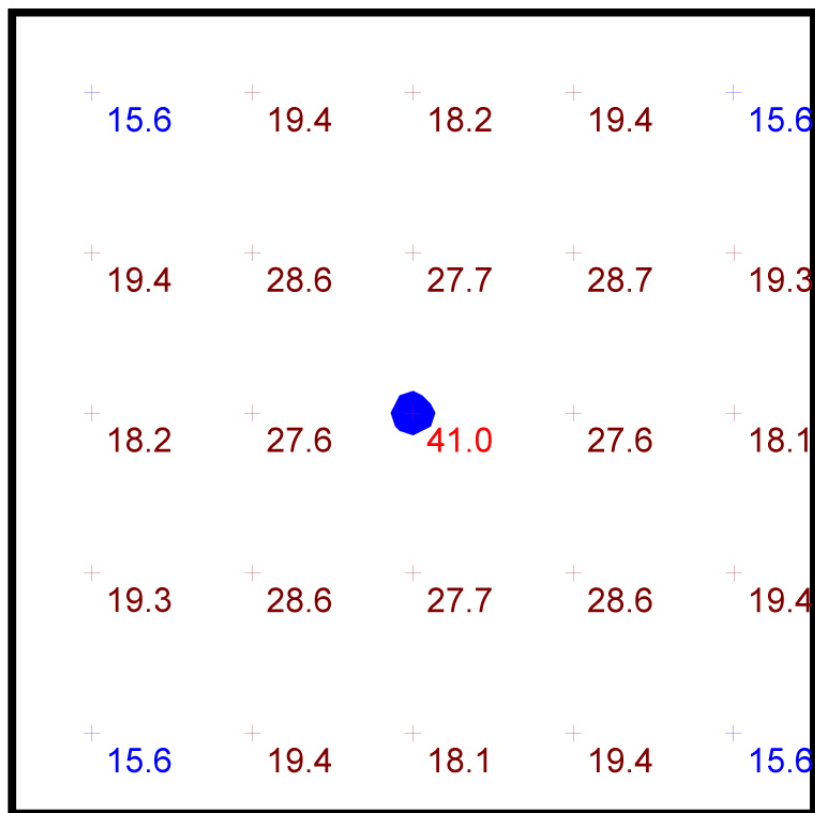
if no downlight, spun aluminum end cap in matte white with polished nickel finial is provided

optional downlight w/ white reflector and frosted lens

performance

Statistics

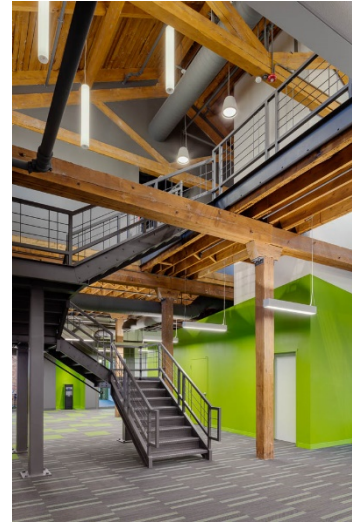
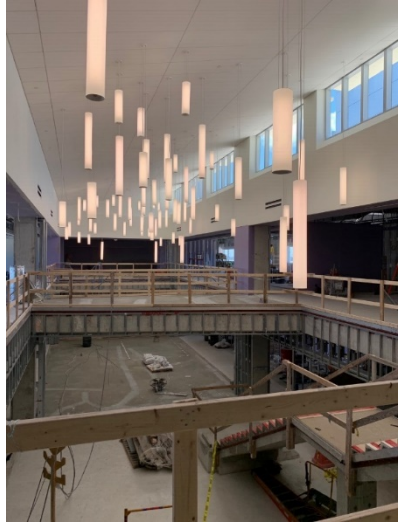
Description	Symbol	Avg	Max	Min	Max/Min	Avg/Min
i.rod	+	22.2 fc	41.0 fc	15.6 fc	2.6:1	1.4:1



Plan View
Scale - 1" = 2ft

- 10' x 10' x 14'H space
- 80/50/20 reflectances
- bottom of fixture at 8' aff
- FC readings at 2.5' aff
- layout conducted using P9448 HI output unit (4483 lumens w/ 1500 lumen down light)





www.impactltg.com

- spec sheet and color chart
- photometric files and BIM models
- built to order in Saint Louis, MO, USA
- 4-week lead time

i.rod™ 5-slider

