

job name:   
 type:

## bul.it™ LED ceiling spec sheet

### material

#### housing

precision CNC spun .063" aluminum parabolic housing with rolled bottom edge for added strength and matte anodized finish standard. optional powder coat paint finishes.

#### array platform

.080" spun aluminum powder coat painted matte white.

#### bottom lens (optional)

.125" P95 frosted acrylic concave dome with 3 finger holes. recesses slightly into fixture.

### optics

.050" spun aluminum conical reflector finished in high reflectance (>92%) matte white powder coat.

### efficiency

constant current driver operates LED consistently, regulating the current flow through it to produce the most consistent light output and efficiency. constant current driver protects LEDs from voltage fluctuations in the building power system, eliminating stress from over voltage, inrush surges, and flicker from voltage fluctuations, assuring long service life.

### LED

BCOB array in 3000K, 3500K, or 4000K (80 cri). under normal operating conditions, the LEDs employed are rated for >36,000hrs L70 (6.8K) per IES TM-21 from LM-80 test data, and 71,000hrs L70 projected life.

### driver

Thomas Research LED-40W series, class 2 power unit, universal input (120-277 vac), 10% minimum dimming level, PF > .90, THD <20% at full load, >418khrs MTBF, protections include short circuit, over current, over voltage. Built-in 1-10v dimming. Specify under options.

### mounting

designed to mount to 4 inch octagon junction box (by other). consult factory for installation instructions.

### finish

standard is silver anodized finish. optionally, select from standard powder coat paint finishes or specify RAL# for custom colors.

### emergency

emergency not available. if required, recommend use of inverter (by other).



## catalog number

--	--	--	--

### size

**C3312**  
12" dia X 13.75" ht

**C3316**  
16" dia X 16.5" ht

### LED array

**30LO** 3000K

**30HI** 3000K

**35LO** 3500K

**35HI** 3500K

**40LO** 4000K

**40HI** 4000K

### standard finish

**AN** silver anodized

### painted finishes

**BR** brick red

**BU** blue

**BZ** bronze

**CP** champagne

**MB** military blue

**MN** mint

**MW** matte white

**OR** orange

**RD** red

**SB** satin black

**SS** satin silver

**TG** textured gray

**TW** textured white

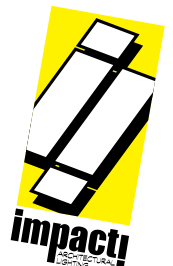
**YO** yellow

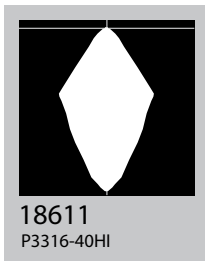
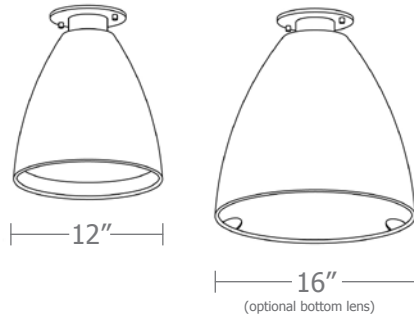
### premium finish

**RAL** specify RAL#

### options

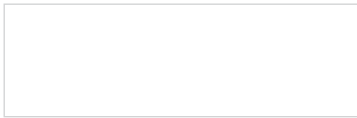
**BL** Bottom lens





Cat No	Delivered Lumens	Watts		Amps	
		120V	277V	120V	277V
<b>C3312 LO</b>		38	38	0.32	0.14
4000K	2770				
3500K	2597				
3000K	2073				
<b>C3312 HI</b>		45	45	0.38	0.16
4000K	3304				
3500K	3098				
3000K	2473				
<b>C3316 LO</b>		38	38	0.32	0.14
4000K	2770				
3500K	2597				
3000K	2073				
<b>C3316 HI</b>		45	45	0.38	0.16
4000K	3304				
3500K	3098				
3000K	2473				

## Powder Coat Paint Finishes



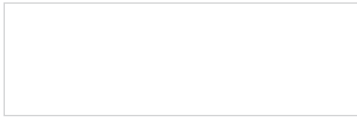
**MW** matte white



**SB** satin black



**YO** yellow 1018



**TW** textured white



**CP** champagne



**RD** red 3020



**BZ** bronze



**BU** blue 5017



**SS** satin silver



**BR** brick red



**OR** orange 2011



**TG** textured gray



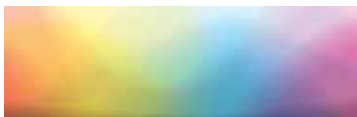
**MB** military blue



**MN** mint 6019

For accurate color verification, actual finish samples are available upon request.

## Premium Finishes\*



**RAL#**

For accurate color verification, actual finish samples are available upon request.

\*Available on select series. Consult product spec sheet for availability.

