

job name:   
 type:

## yo.yo LED™ spec sheet

### material

#### housing

three-piece precision CNC spun .063" aluminum.

#### bottom diffuser

.125" gloss white acrylic.

### efficiency

constant current driver operates LED consistently, regulating the current flow through it to produce the most consistent light output and efficiency. constant current driver protects LEDs from voltage fluctuations in the building power system, eliminating stress from over voltage, inrush surges, and flicker from voltage fluctuations, assuring long service life.

### LED

two COB light engines in 3000K, 3500K, or 4000K (80 cri). (indirect and direct) under normal operating conditions, the LEDs employed are rated for >36,000hrs L70 (6.8K) per IES TM-21 from LM-80 test data, and 71,000hrs L70 projected life. white power cord is standard with other color options listed below.

### driver

integral, class 2 power unit, universal input (120-277 vac), 10% minimum dimming level, PF >.90, THD <20% at full load, >418khrs MTBF, protections include short circuit, over current, over voltage. wired for 0-10v dimming from factory. (dual circuit dimming optional) (requires second power cord)

### mounting

5"dia. spun steel canopy in satin white with 6ft stainless steel cable tripod and field adjustable grippers that allow for exact AFF mounting heights.

### finish

standard is matte anodized finish. optionally, select from standard powder coat paint finishes or specify RAL# for custom colors.

### emergency

emergency not available. if required, recommend use of inverter (by other).



## catalog number

--	--	--	--

### size

#### P5012

12.5"dia X 8"ht

#### P5016

16.25"dia X 10.25"ht

### LED

**30LO** 3000K

**30HI** 3000K

**35LO** 3500K

**35HI** 3500K

**40LO** 4000K

**40HI** 4000K

### standard finish

**AN** silver anodized

### painted finishes

**BR** brick red

**BU** blue

**BZ** bronze

**CP** champagne

**MB** military blue

**MN** mint

**MW** matte white

**OR** orange

**RD** red

**SB** satin black

**SS** satin silver

**TG** textured gray

**TW** textured white

**YO** yellow

### Premium Finish

**RAL** specify RAL#

### options

**BKPC** Black power cord and canopy

**SBPC** Silver braid power cord and white canopy

**DCDM** Dual circuit dimming

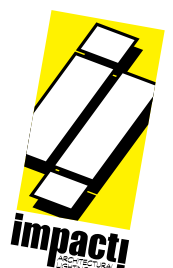
	Indirect HI*	Indirect LO*	Direct*
<b>P5012</b>	1885 lm 19 w	1000 lm 12 w	1090 lm 12 w
<b>P5016</b>	3000 lm 27 w	1500 lm 15 w	1090 lm 15 w

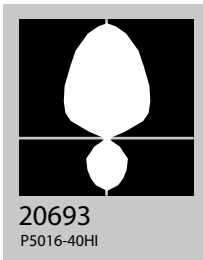
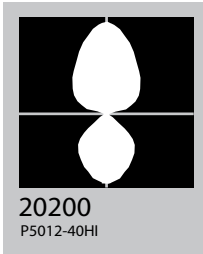
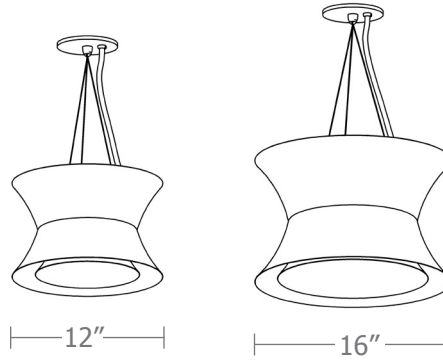
\* preliminary delivered lumens.



DRY / DAMP

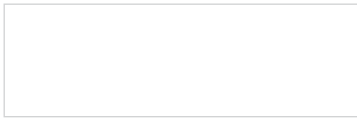
made in the  
usa!





Cat No	Delivered Lumens	Watts		Amps	
		120V / 277V	120V	277V	
<b>P5012 LO</b>		25	.21	.09	
4000K	1940				
3500K	1928				
3000K	1869				
<b>P5012 HI</b>		34	.28	.12	
4000K	2961	ies file # 20200			
3500K	2943				
3000K	2852				
<b>P5016 LO</b>		35	.29	.13	
4000K	2783				
3500K	2765				
3000K	2680				
<b>P5016 HI</b>		48	.40	.17	
4000K	4225	ies file # 18440			
3500K	4198				
3000K	4069				

## Powder Coat Paint Finishes



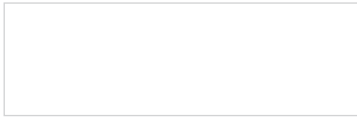
**MW** matte white



**SB** satin black



**YO** yellow 1018



**TW** textured white



**CP** champagne



**RD** red 3020



**BZ** bronze



**BU** blue 5017



**SS** satin silver



**BR** brick red



**OR** orange 2011



**TG** textured gray



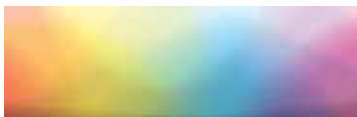
**MB** military blue



**MN** mint 6019

For accurate color verification, actual finish samples are available upon request.

## Premium Finishes\*



**RAL#**

For accurate color verification, actual finish samples are available upon request.

\*Available on select series. Consult product spec sheet for availability.

