

i.bay ii LED™ specifications

sizes

**P4626.LED** 26"dia. x 8.75"ht.

**P4638.LED** 38"dia. x 11.75"ht.

material

trim ring

precision CNC spun .063" aluminum. rolled bottom edge for added strength.

diffuser

.187" virgin matte white acrylic dome held in place with allen key set screws recessed into trim ring.

top dome

.125" virgin matte white or .187" pattern 12 clear prismatic acrylic dome.

optics

reflector

.050" aluminum array platform painted high reflectance (>92%) matte white powder coat provides 90% downlight.

LED module

ULT Everline board in 3000K, 3500K, or 4000K (80 cri). under normal operating conditions, the LEDs employed are rated for >36,000hrs L70 (6.8K) per IES TM-21 from LM-80 test data, and 71,000hrs L70 projected life. white power cord is standard with other color options available.

driver

Roal Strato series, class 2 power unit, built-in active PFC function, universal input (120-277 vac), 10% minimum dimming level, PF >80, protections include short circuit, over current, over voltage and over temperature. built-in 1-10v dimming. specify under options. (26" dia)

Meanwell LPF series, class 2 power unit, universal input (120-277 vac), 10% minimum dimming level, PF >92, THD <20% at full load, >418khrs MTBF, protections include short circuit, over current, over voltage and over temperature. built-in 1-10v dimming. specify under options. (38" dia)

mounting

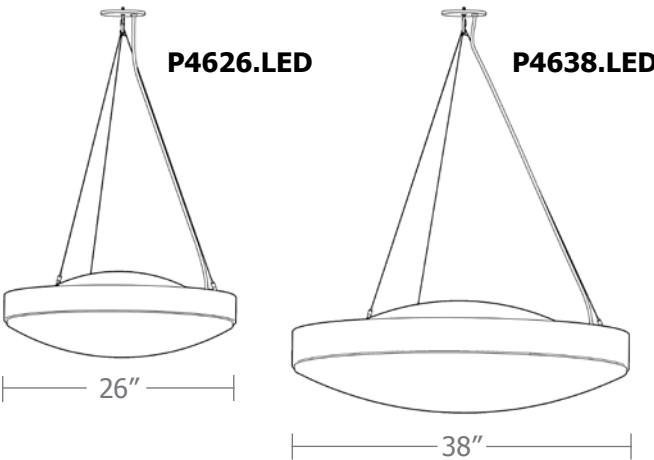
5"dia. spun steel canopy in satin white with gated hook. 4 ft long stainless steel tripod cables attach to trim with field adjustable grippers that allow for exact AFF mounting heights.

finish

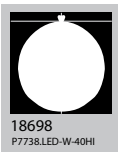
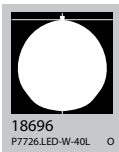
select from standard powder coat paint finishes or brushed aluminum or specify RAL# for custom colors.



i.bay ii LED™



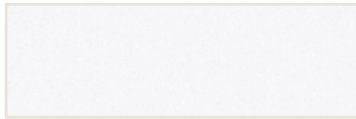
**impact!**  
ARCHITECTURAL  
LIGHTING



## Powder Coat Paint Finishes



**MW** matte white



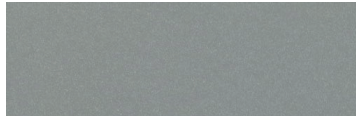
**TW** textured white



**AW** antique white



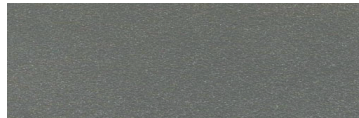
**SM** silver metallic



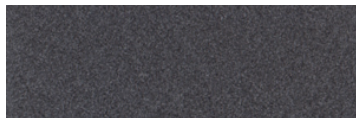
**SS** satin silver



**AP** anodized paint



**TG** textured gray



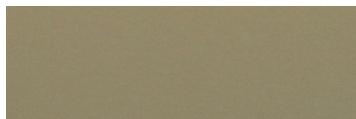
**SG** steel gray



**SB** satin black



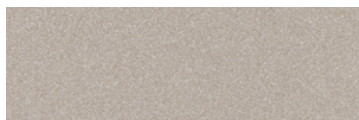
**BM** brass metallic



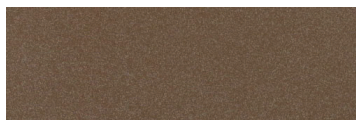
**AG** antique gold



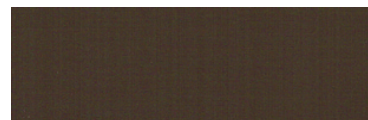
**CM** copper metallic



**CP** champagne



**LB** light bronze



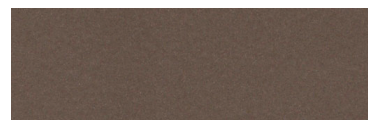
**BS** bronze satin



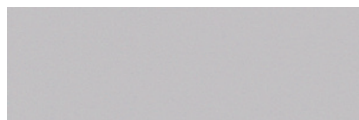
**BO** brown



**OB** oil rubbed bronze



**BZ** bronze



**GY** gray



**MB** military blue



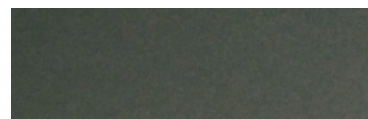
**JM** jeans metallic



**BR** brick red



**AC** aged copper



**HM** highland metallic

For accurate color verification, actual finish samples are available upon request.

## Premium Finish



**BA** brushed aluminum



**RAL#**

Available on select series. Consult product pages for availability.

**impact!**  
ARCHITECTURAL  
LIGHTING