

i.bay LED™ specifications

sizes

P4526.LED 26"dia. x 5.75"ht.

P4538.LED 38"dia. x 7.75"ht.

material

trim ring

precision CNC spun .063" aluminum. rolled bottom edge for added strength.

diffuser

.187" pattern 12 clear prismatic acrylic dome with precision CNC spun .063" aluminum plate.

wire guard (optional)

bright zinc plated 9 gauge wire guard.

optics

reflector

.050" aluminum array platform painted high reflectance (>92%) matte white powder coat provides 100% downlight. for 10% uplight, specify under options.

LED module

ULT Everline board in 3000K, 3500K, or 4000K (80 cri). under normal operating conditions, the LEDs employed are rated for >36,000hrs L70 (6.8K) per IES TM-21 from LM-80 test data, and 71,000hrs L70 projected life. white power cord is standard with other color options available.

driver

Roal Strato series, class 2 power unit, built-in active PFC function, universal input (120-277 vac), 10% minimum dimming level, PF >80, protections include short circuit, over current, over voltage and over temperature. built-in 1-10v dimming. specify under options. (26" dia)

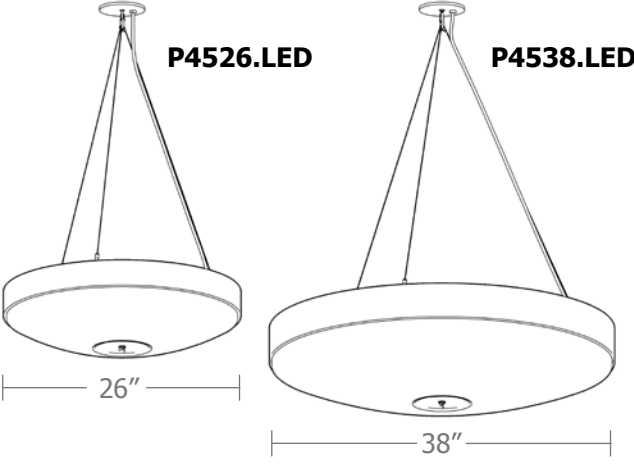
Meanwell LPF series, class 2 power unit, universal input (120-277 vac), 10% minimum dimming level, PF >92, THD <20% at full load, >418khrs MTBF, protections include short circuit, over current, over voltage and over temperature. built-in 1-10v dimming. specify under options. (38" dia)

mounting

5"dia. spun steel canopy in satin white with gated hook. 4 ft long stainless steel tripod cables attach to trim with field adjustable grippers that allow for exact AFF mounting heights.

finish

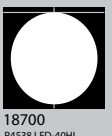
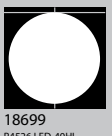
select from standard powder coat paint finishes or brushed aluminum or specify RAL# for custom colors.



i.bay LED™



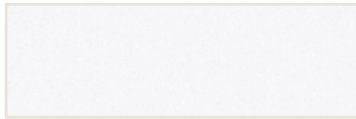
impact!
ARCHITECTURAL
LIGHTING



Powder Coat Paint Finishes



MW matte white



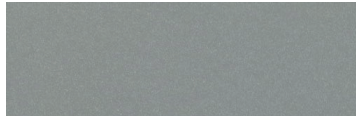
TW textured white



AW antique white



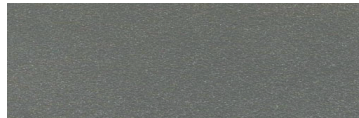
SM silver metallic



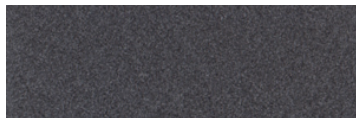
SS satin silver



AP anodized paint



TG textured gray



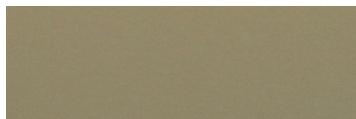
SG steel gray



SB satin black



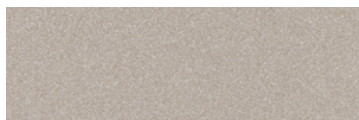
BM brass metallic



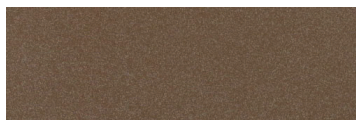
AG antique gold



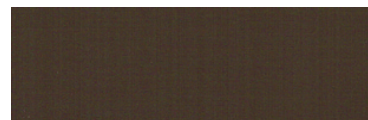
CM copper metallic



CP champagne



LB light bronze



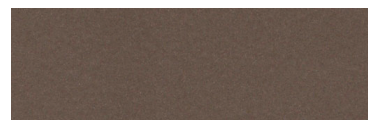
BS bronze satin



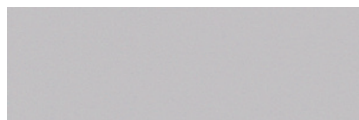
BO brown



OB oil rubbed bronze



BZ bronze



GY gray



MB military blue



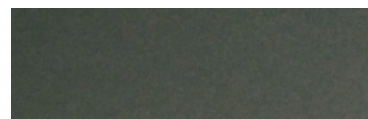
JM jeans metallic



BR brick red



AC aged copper



HM highland metallic

For accurate color verification, actual finish samples are available upon request.

Premium Finish



BA brushed aluminum



RAL#

Available on select series. Consult product pages for availability.

impact!
ARCHITECTURAL
LIGHTING